



Religare Securities Limited
ODIN DIET - Trading Manual

Introduction

Religare ODIN DIET is a comprehensive trading tool with a facility to trade in cash, derivatives, mutual funds, IPOs, currencies and commodities all in one screen. With this platform you can conveniently trade on National Exchanges i.e.

1. National Stock Exchange of India Limited (NSE)
2. Bombay Stock Exchange of India Limited (BSE)
3. Multi Commodity Exchange of India Ltd (MCX)
4. National Commodity & Derivatives Exchange Limited (NCDEX)
5. MCX Stock Exchange Limited (MCX SX)

Key features of this trading solution are:

- a) Traders Terminal on your desktop
- b) Access to all asset class
- c) Real time streaming quotes
- d) Technical Charting Intraday & EOD
- e) Multiple Market Watch
- f) Online Transfer of funds
- g) Integrated DP & Backoffice

At the end of the manual, you should be able to

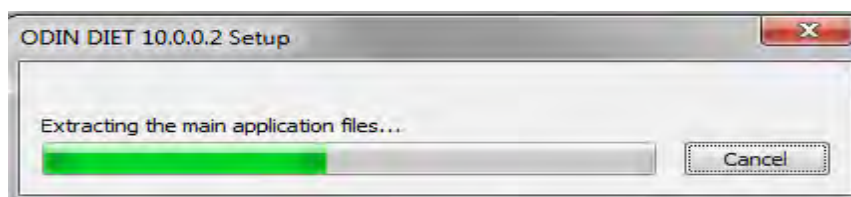
- Login to Religare Diet and Change Password
- Place Buy and Sell orders
- View Reports
- Transfer Funds and withdraw
- Know about extra tools

Minimum System Requirements

- Operating System-Windows XP/Vista
- Intel® Core™2 Duo Processor E8400(6M Cache, 3.00 GHz, 1333 MHz FSB)Memory-1GB, Storage-80 GB STAT HDD, GB Eth NIC

How do I access the trading terminal?

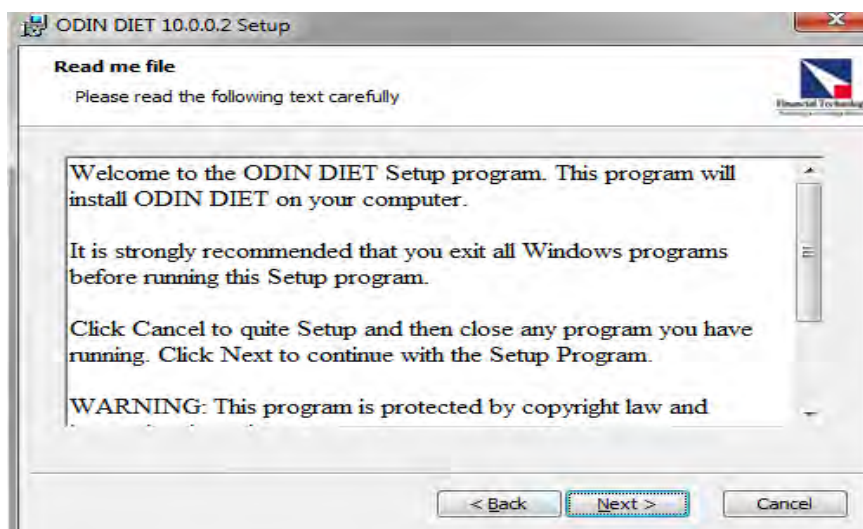
- Open "Downloads" page by using below mentioned URL:
<http://www.religareonline.com/myreligare/downloads/EquityDownload.aspx>
- Click on Odin Diet Application to download installation file (zip file).
- Open downloaded zip file then double click on the "EQ_Diet_10.0.0.2_Full_Setup.exe" to run installation



- Click on “NEXT”



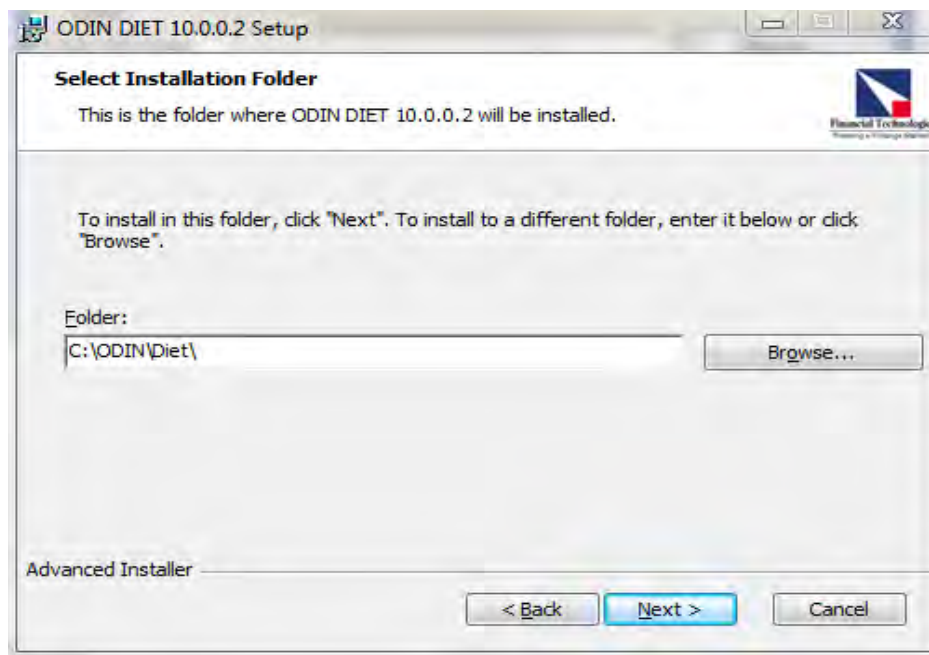
- Again click on “NEXT”



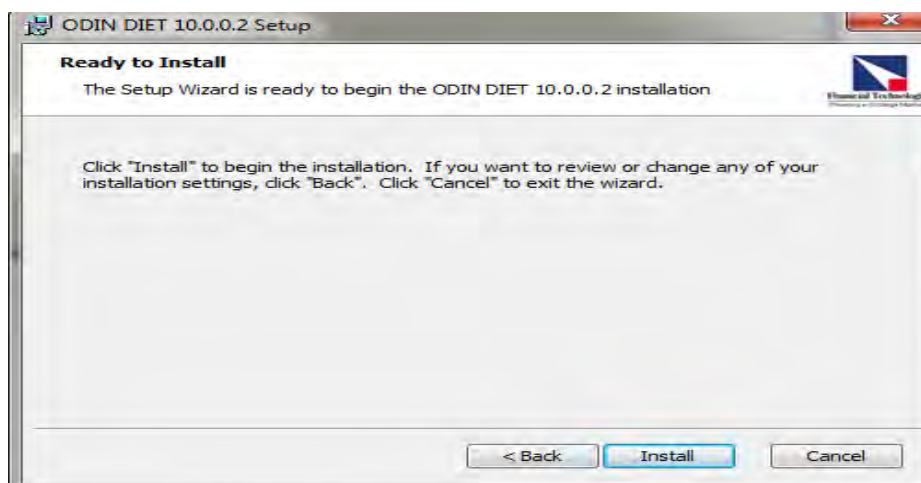
- Click on “I accept the terms” to agree the license agreement and click on “NEXT”



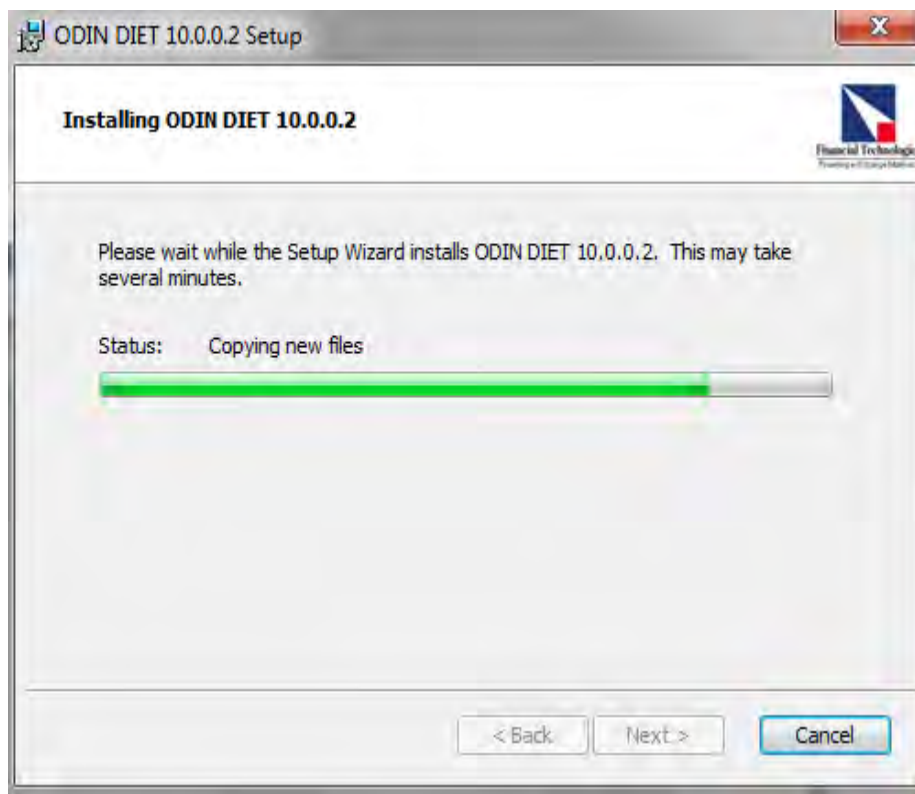
- Leave the installation folder as default and click on “NEXT”



- Click on “Install” to continue with setup



- Necessary files will be extracted on the system.



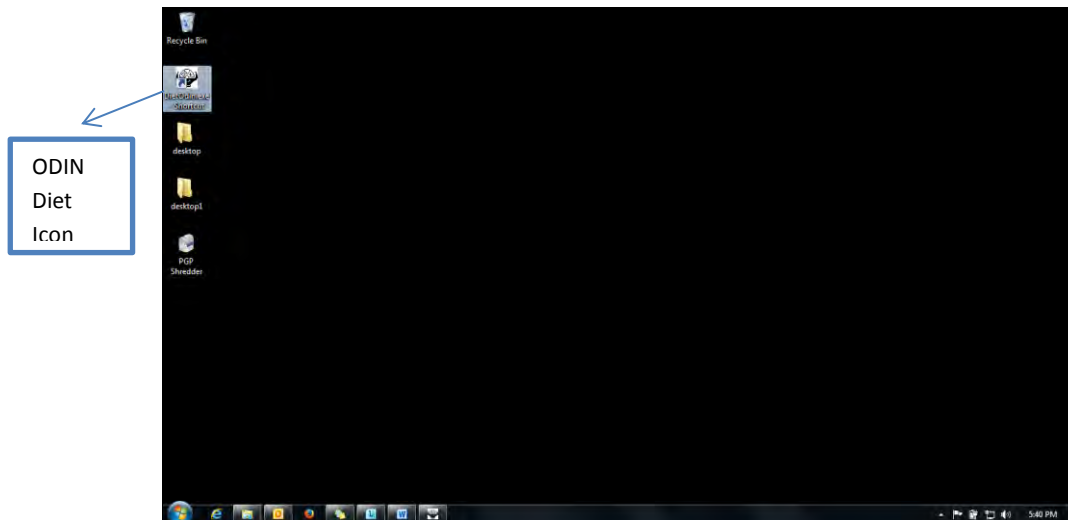
- Click on “Finish” to complete the setup



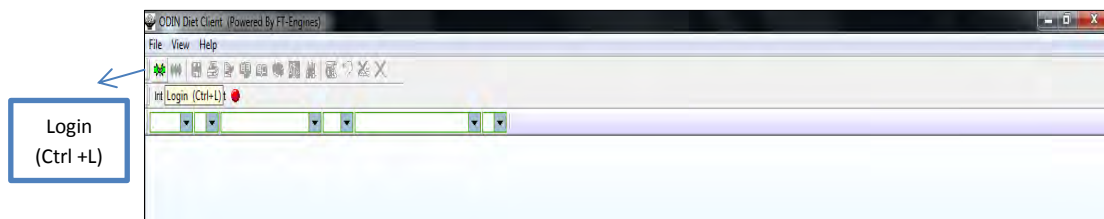
Login to ODIN DIET Online Trading Platform

For logging to your trading account, follow these steps:

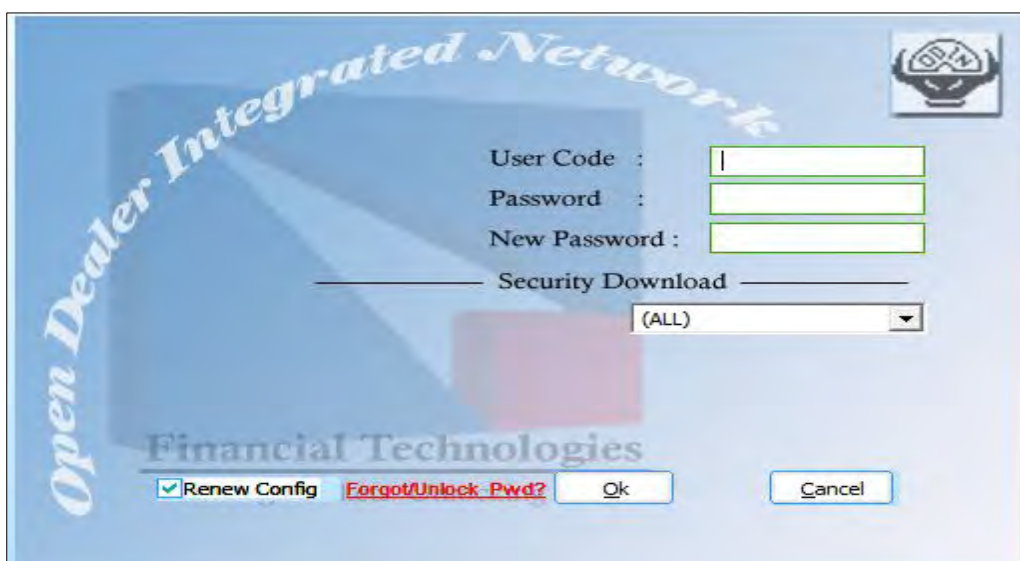
- Double click on the 'ODIN Diet 10.0.0.2' icon that is visible on the desktop



- The ODIN DIET application is launched. Click on the green colour icon on the extreme left of the application screen (as shown in the following screenshot).



- The application log in window appears



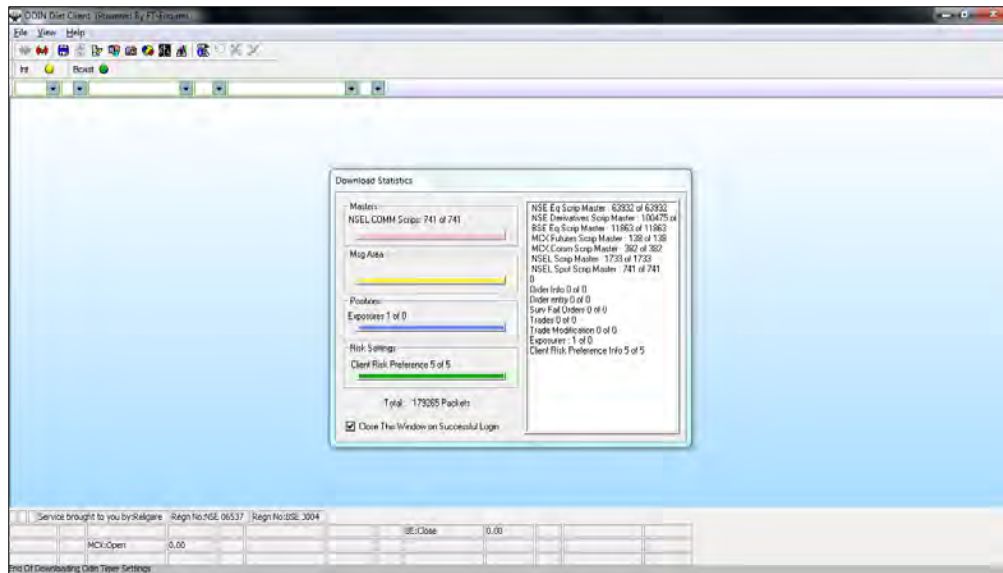
- Type in the ODIN DIET User Code (i.e. Client Code) assigned to you
 - Enter the password mailed to you
 - Type in a new alphanumeric case sensitive password of your choice. The password needs to be of minimum six characters with a mix of alphabets and numbers.
 - Check all checkboxes for which trading is available under security download. This will enable the auto downloading of the daily scrip master files
 - Click OK. The application would ask you to re-confirm the new password that you have set.
- Note: New Password is required only on first time login or on forget password request.

Enter new password

- Please type in your new password for re-confirmation.

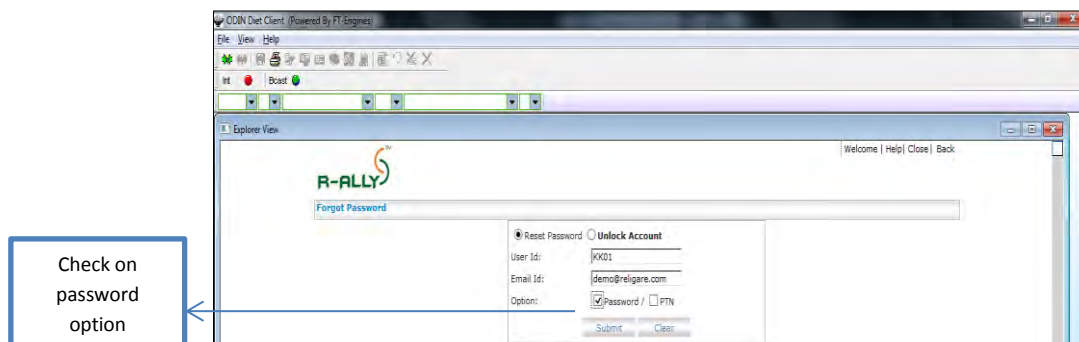
Confirm New Password

The following screen will appear for downloading of scrip master for available exchanges



Forget Password

- In case you have forgotten password of the trading application, retrieve it through forget password link available on login screen
- Type user id and registered mail id in the forget password screen and select password check box.

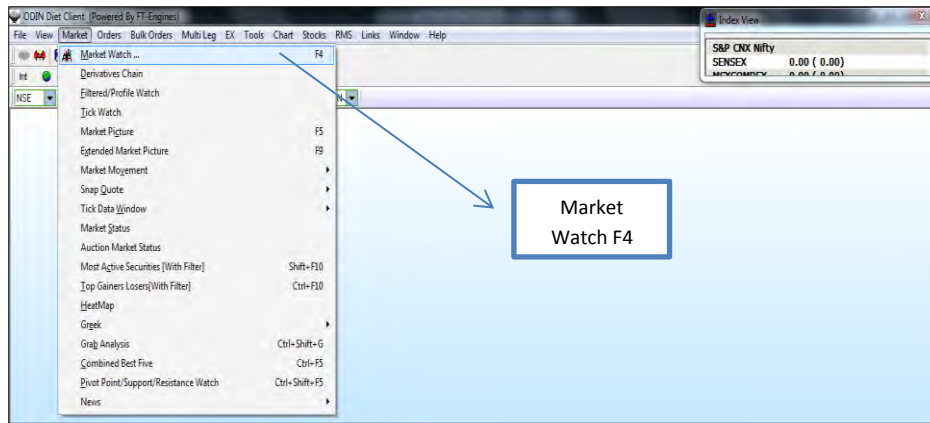


- Click SUBMIT button. The password will be provided instantly through e-mail and SMS on your registered mail id and registered number. This will be one time password and you will be prompted to change it mandatorily on login.

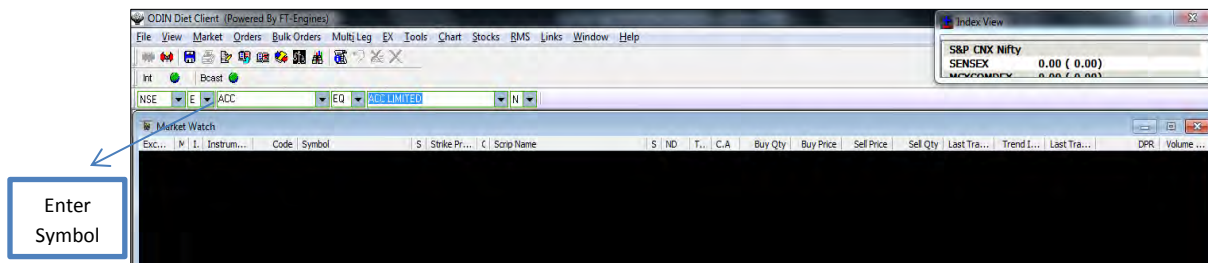
Market Watch

Shortcut Key: F4

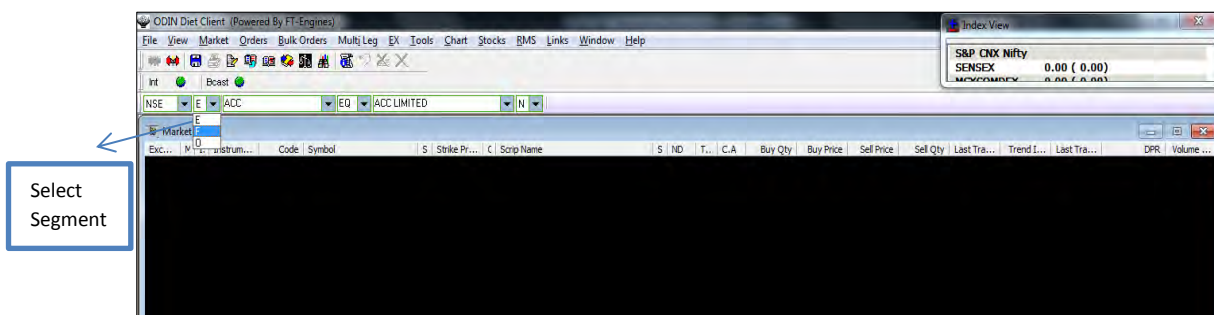
- In market watch window, changes in the best price and quantities are highlighted in real time. While Blue colour indicates an increase, the Red colour indicates a decrease in price/quantities. No change in colour indicates that prices / quantities have not changed. Multiple markets watch windows can be opened simultaneously.
- Click on MARKETWATCH icon or press F4 shortcut key. The following screen appears.



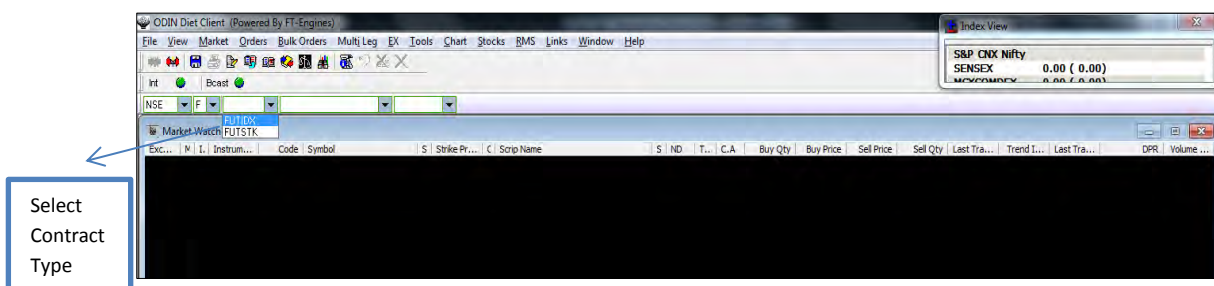
- You can **add specific stock** or and future contract directly from the drop down combo box.
- Select exchange from the dropdown combo box. Enter the scrip name. On pressing tab on your keyboard, the scrip description will be displayed



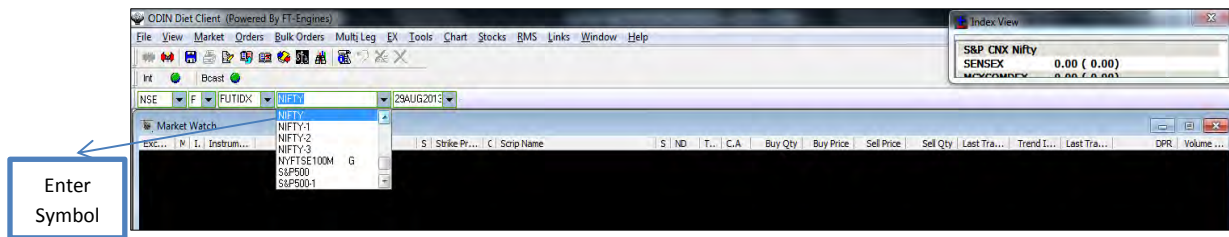
- Press enter on your keyboard to add scrip in market watch.
- For derivative segment select 'F- Future or O- Option' in filter next to exchange in drop down combo box.



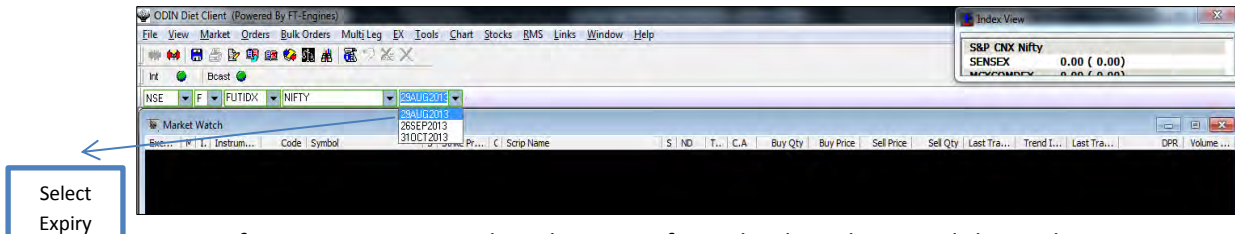
- Select FUTIDX/FUTSTK for futures contract or OPTIDX/OPTSTK for options contract



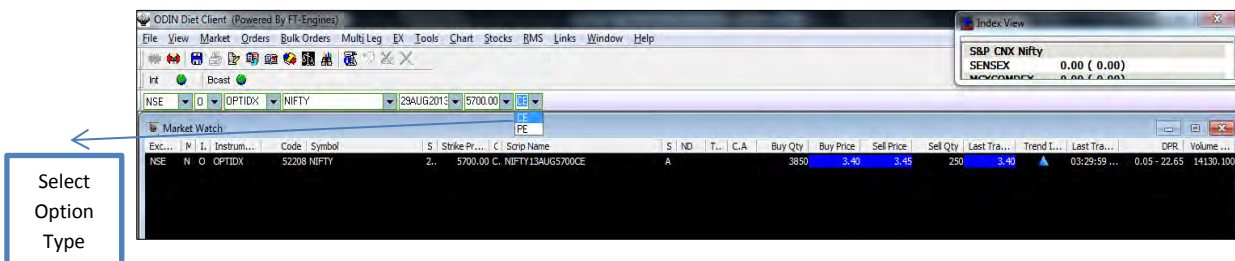
- Select the security symbol



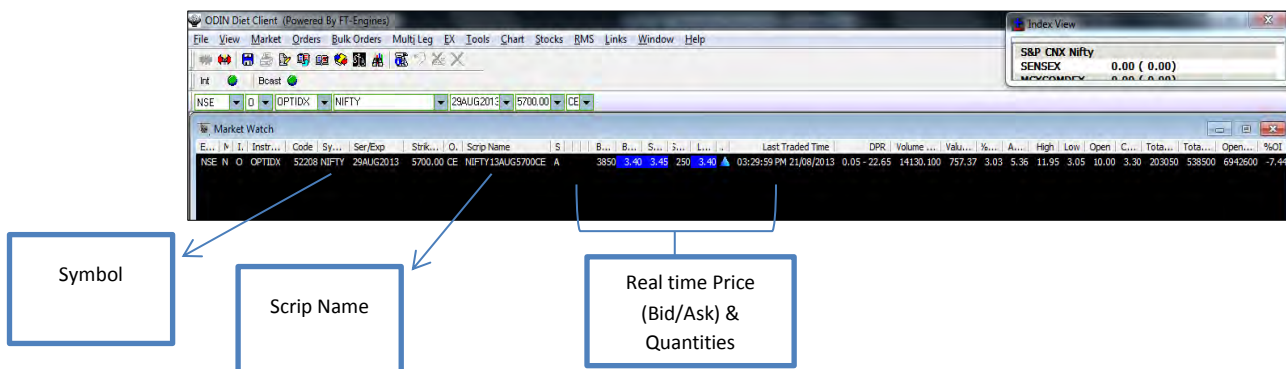
- Select the expiry date from the drop-down.



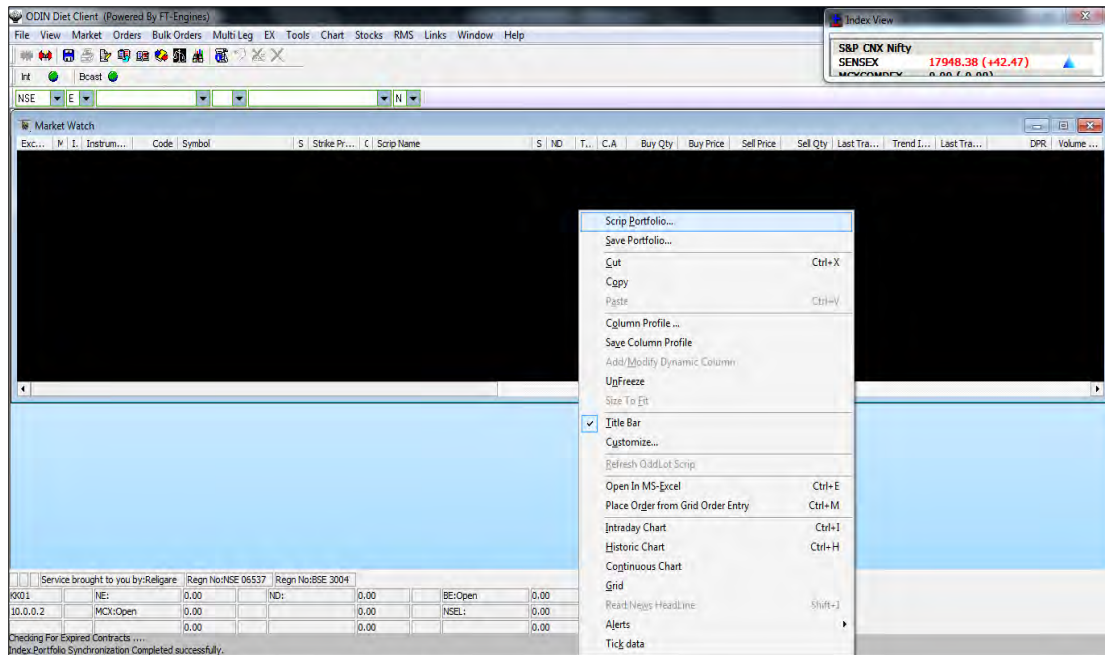
In case of options contract, select the expiry from the drop down and then select option type



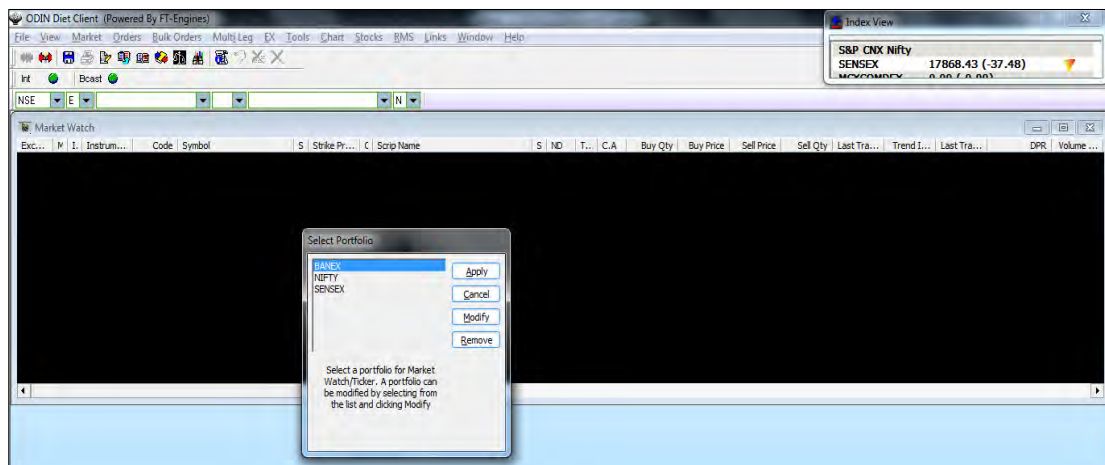
- After addition of the stock and contract in market watch you will be able to see price and quantities details.



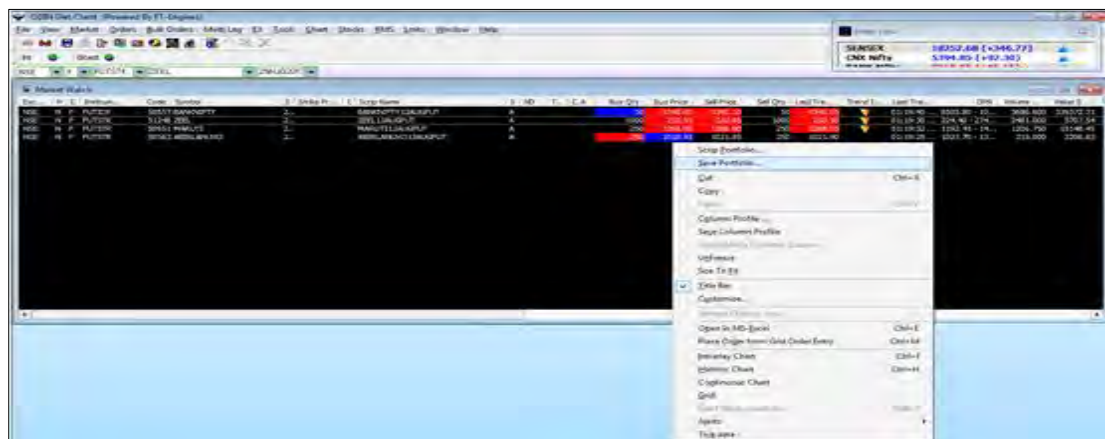
- To **view default portfolio** provided by Religare, right click on market watch and then click on portfolio.



- Select default portfolio as 'BANEX'



- Click on Apply button
- You can **save portfolio** directly from the market watch. Right click on the Market Watch screen window to save the portfolio that you have created.

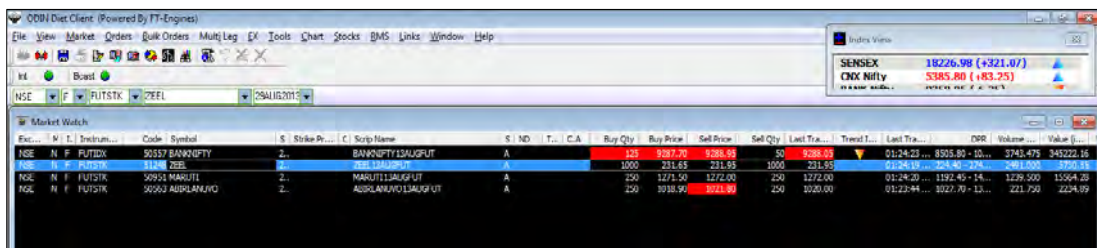


- Right click on the market watch screen and select scrip portfolio to change to another saved portfolio.
- You can also **create profiles** by saving the columns of market watch as per your choice. Right click on market watch and select save column profile to save profile.
- Give name to the portfolio like “Mid Cap” and then click OK to save.
- For changing profile, right click on market watch and select column profile to choose profile of your choice.

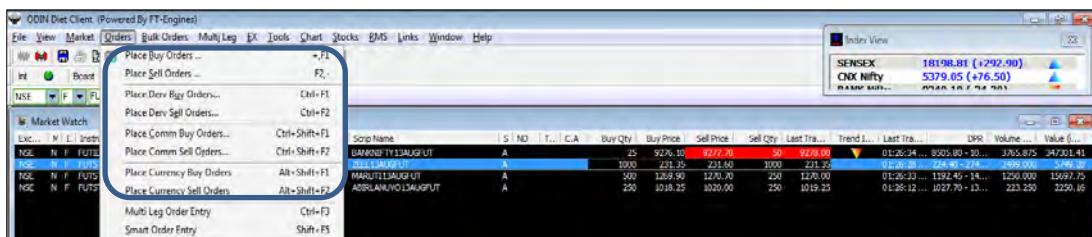
Place Order

Shortcut Key: F1 (Buy)/ F2 (Sell)

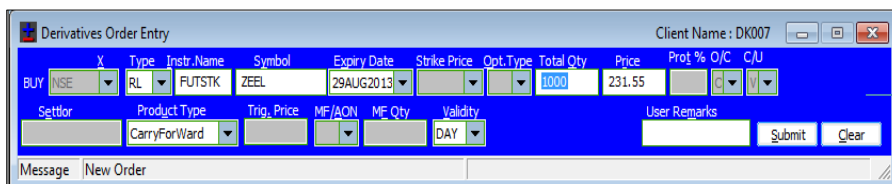
- For placing an order select the stock on market watch and then select orders in menu bar.



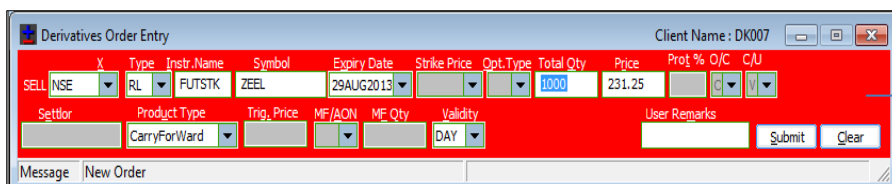
- Click on ‘Place buy orders’ or ‘Place sell orders’ to place buy or sell orders respectively. Alternatively, Press F1 to open buy order entry form or F2 to open sell order entry form.



- In the order form (showing order form for derivative segment)



Derivatives Buy
Order Entry
Form



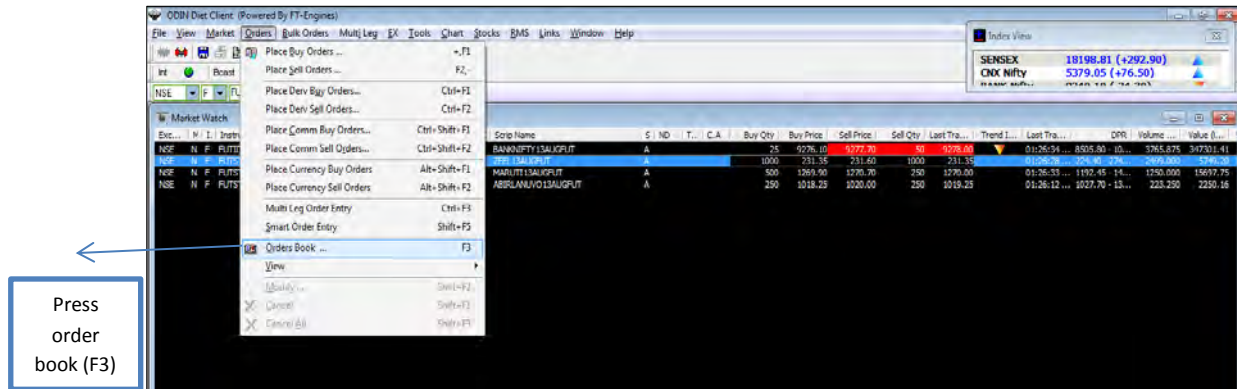
Derivatives Sell
Order Entry
Form

- Enter required quantity to buy or sell
- Enter required price
- Select product type and press submit
- On pressing submit, system will prompt for authorization. Click on Yes to place order.

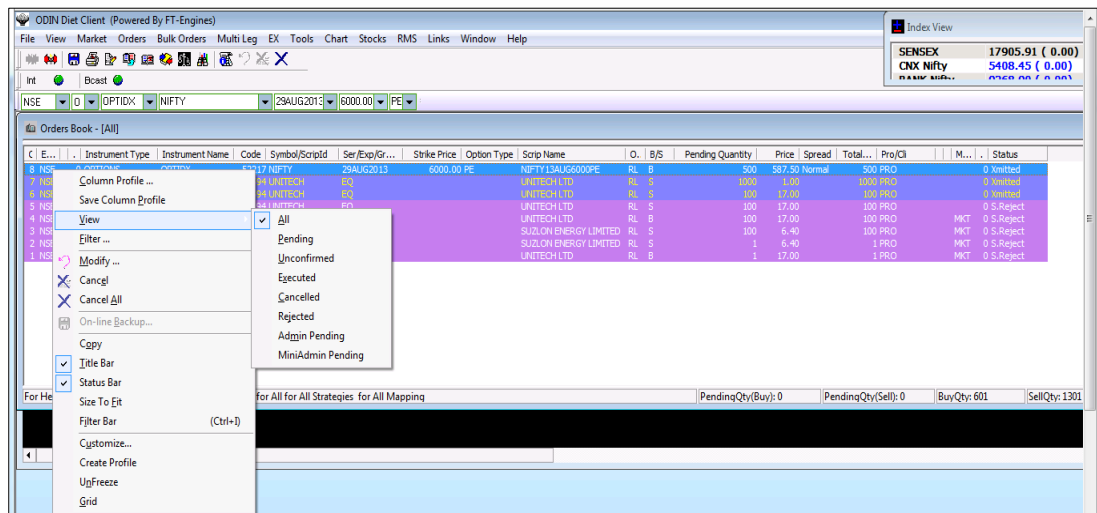
Order Book

Shortcut Key: F3

- You can check the status of all orders in the order book. The order book reflects pending, rejected and executed order status for buy/sell order for current trading day.
- To open order book, click on orders and then select 'order book' or alternately press 'F3' Shortcut key

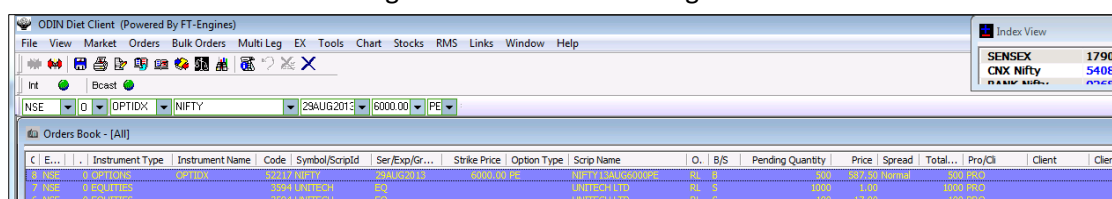


- The orders can be filtered as pending, executed and all.
- Pending orders are those orders which are not traded and are pending at exchange
- Executed orders are those orders which got traded/ executed in the exchange.
- Rejected orders are those orders which are rejected by exchange or by Religare's Surveillance.



Order Modification

- The orders submitted to exchange can be modified through order book window.



- Select row of pending order for a stock in order book. Right click and then select modify.
- Price and the quantity in the pending orders can be modified.

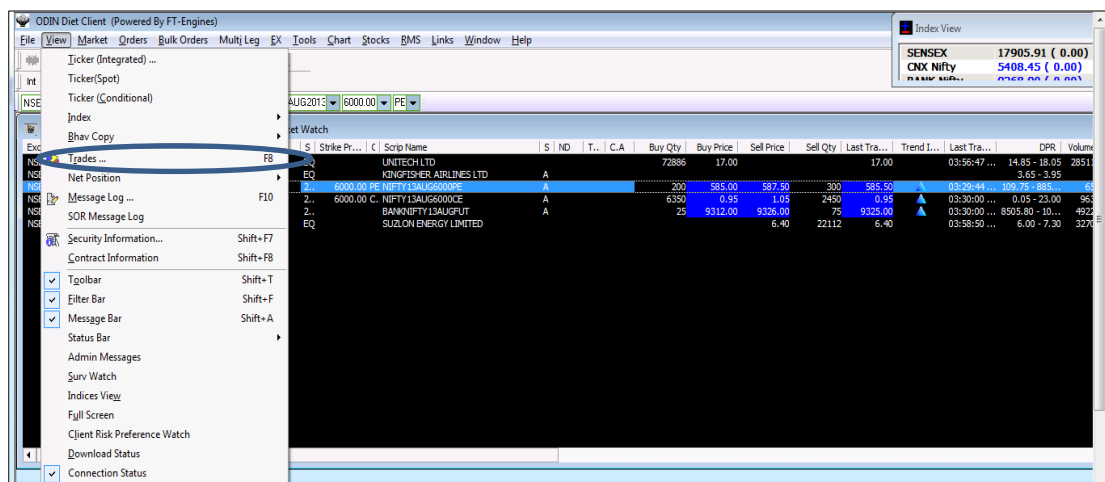
Order Cancellation

- The orders submitted to exchange can be cancelled through order book window.
- Select row of pending order for a stock in order book. Right click and then select 'Cancel' or 'Cancel All'. (Note: Only pending orders can be cancelled.)

Trade Book

Shortcut Key: F8

- All trades done on a particular day can be viewed in the trade book window. Trade book gives details of order executed at the exchange along with the execution details such as Traded Quantity and Traded Price.
- Click on 'view' on menu bar and then select 'trade' to open the trade book window or alternatively press 'F8' Shortcut key



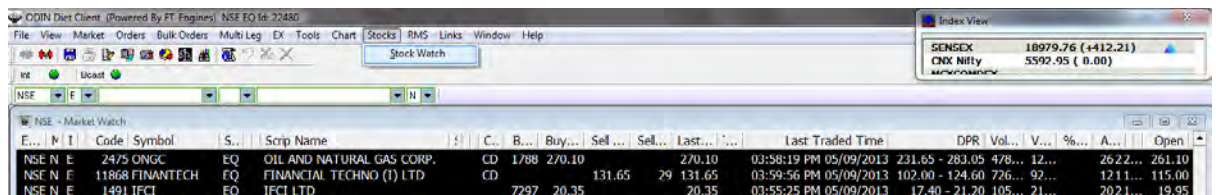
Net Position

Shortcut Key: ALT+F6

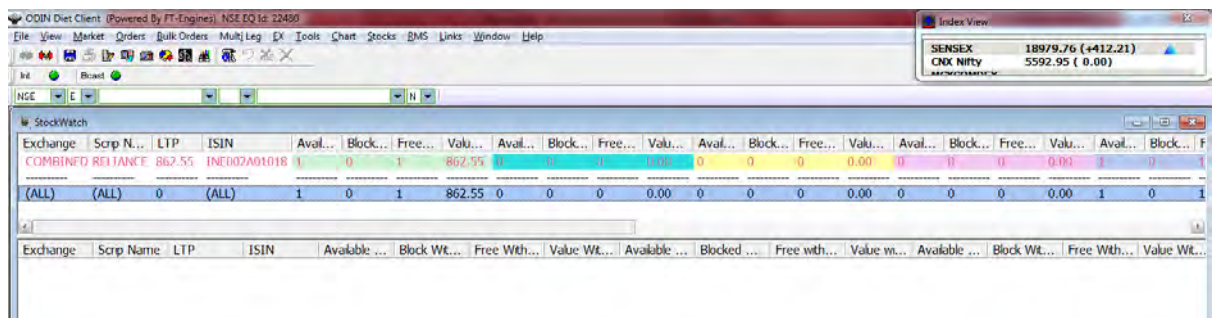
- The integrated net position window gives details of net position such as total buy/sell quantity, buy/sell value, buy/sell average price, net quantity, net price, market price and mark to market gain/loss.
- These details can be viewed for the day and for a settlement.
- For cash segment this window reflects details for the day and for future and commodities till the end of the contract.
- Click on 'View' on menu bar and then select net position or alternatively press 'ALT+F6' Shortcut key

Stock Watch

- Stock watch provides the details of the cash segment delivery based holding available in pool account.
- Click on 'Stocks' on menu bar and then select stock watch'.



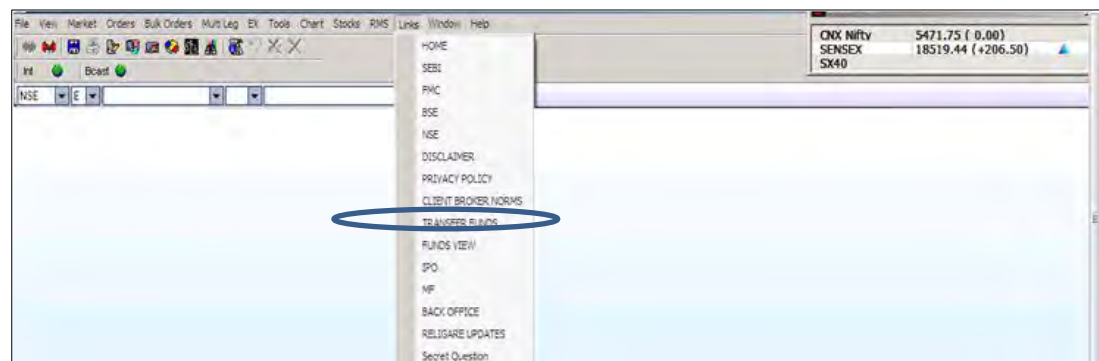
- Stocks can be directly sold through a stock watch. Right click on a particular stock and exchange in which you wish to sell and then click on 'Sell Today's Stock'.



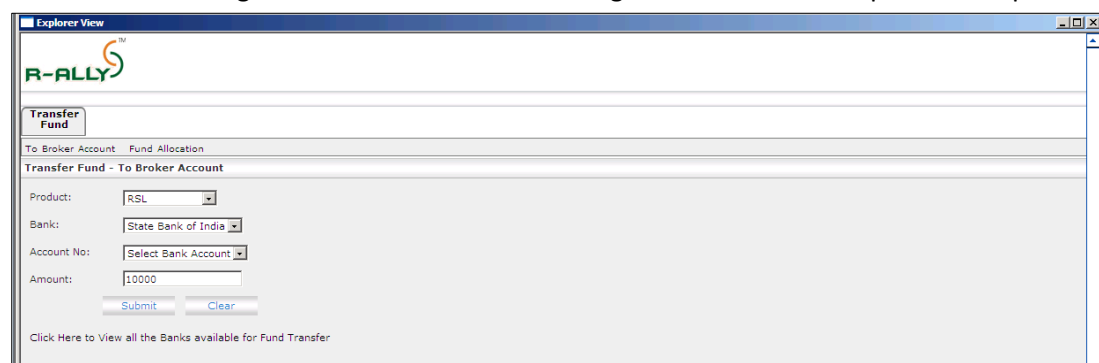
- In sell order form, quote price & quantity and then click on 'submit'.

Transfer Fund

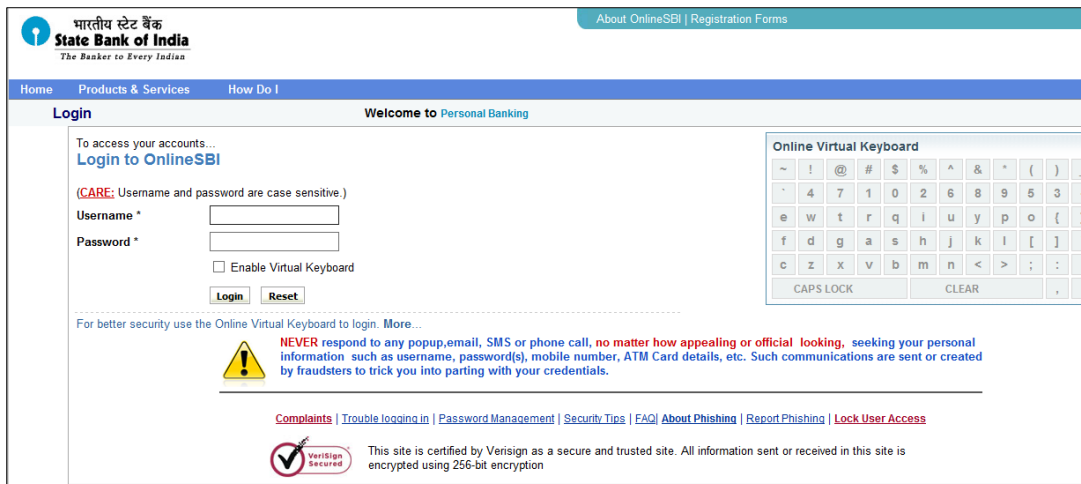
- Through this functionality you can transfer funds online from your mapped bank account to your trading account.
- Click on 'links' on menu bar and then select 'Transfer Funds'.



- Select 'RSL- for Religare Securities' or 'RCL- for Religare Commodities' in product drop down



- Select Bank which is mapped to your account and from which you want to transfer fund online.
- Select Bank Account number
- Enter amount that you wish to transfer.
- Click 'Submit'
- The page will get redirected to the online banking site of the selected bank

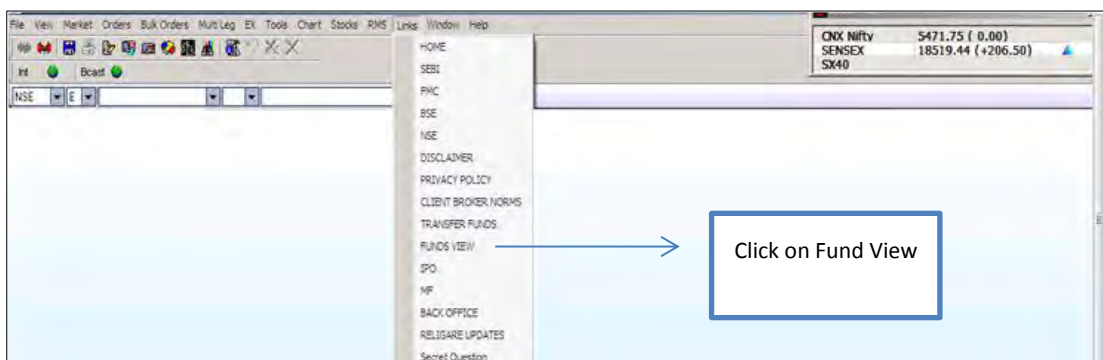


The image shows the State Bank of India (SBI) Online SBI Login page. The page has a blue header with the SBI logo and the text 'State Bank of India The Banker to Every Indian'. Below the header, there is a navigation bar with links for Home, Products & Services, and How Do I. The main content area is titled 'Login' and 'Welcome to Personal Banking'. It contains a login form with fields for Username and Password, and a checkbox for 'Enable Virtual Keyboard'. There are 'Login' and 'Reset' buttons. To the right of the login form is an 'Online Virtual Keyboard' with a grid of characters. Below the login form, there is a warning message: 'NEVER respond to any popup, email, SMS or phone call, no matter how appealing or official looking, seeking your personal information such as username, password(s), mobile number, ATM Card details, etc. Such communications are sent or created by fraudsters to trick you into parting with your credentials.' At the bottom, there are links for Complaints, Trouble logging in, Password Management, Security Tips, FAQ, About Phishing, Report Phishing, and Lock User Access. A VeriSign logo is also present, indicating that the site is certified as a secure and trusted site.

- Enter your Net Banking User Id & password to proceed further
- Post logging in; select the account number registered with Religare.
- Enter the amount and click CONFIRM.
- System shall prompt for a transaction password. Enter transaction password, click SUBMIT and a reference number will get generated
- Please note till the time you do not get a reference number, do not close that particular browser window.
- On successful online fund transfer, a bank reference number is generated. Keep this number for future reference.
- Once you get the reference number, kindly click on FUNDS VIEW to verify the availability of transferred funds.

Fund View

- Click on 'links' and then select the 'Fund View'. The fund view window gets opened in explorer view.



- Through 'Fund view' you can see utilization, available balance for trading and available balance for the allocation to IPO and Mutual funds.
- Select Periodicity as 'All Equity Combined+ Equity Derivative+ Curr Combined' for Equity & derivative segment and 'All Commodity Combined + NSEL' for commodities segment.

Explorer View

R-ALLY

Periodicity/Exchange: All Equity Combined + Equity Derivative + Curr Combined Submit

Description	Trading	IPO	MF	Total
Deposit	1.00	0.00	0.00	1.00
Funds Transferred Today	0.00	0.00	0.00	0.00
Funds withdrawal/Allocation	0.00	0.00	0.00	0.00
Non Withdrawable Deposit/Adhoc Deposit	1.00	NA	NA	1.00
⊕ Collateral	0.00	NA	NA	0.00
⊕ Credit for Sale	0.00	NA	NA	0.00
Total Trading Power Limit	2.00	0.00	0.00	2.00
⊕ Limit Utilization	0.00	0.00	0.00	0.00
⊕ Booked Profit / Loss	0.00	NA	NA	0.00
⊕ MTM Profit/Loss	0.00	NA	NA	0.00
Total Utilization	0.00	0.00	0.00	0.00
Net Available Funds	2.00	0.00	0.00	2.00
For Trading	2.00	0.00	0.00	2.00
For Allocation/Withdrawal	1.00	NA	NA	1.00

- Click 'Submit' to view details.

Fund Allocation

- You can allocate fund from trading account to IPO/MF and vice versa.
- Select 'Allocate Funds'

Transfer Fund

To Broker Account Fund Allocation

Transfer Fund - Fund Allocation

☒ Allocate Funds ☐ Withdraw Funds

Product Wise

Product Name	Available Balance (Rs.)
IPO	0
MUTUAL FUND	0
RSL	1

Move From: RSL Balance (Rs.): 1.00

Move To: IPO Balance (Rs.): 0.00

Amount (Rs.): 1

Submit Clear Refresh

- Select product (i.e. RSL/IPO/ MF) under Move From drop down.
- Select product (i.e. IPO/MF/RSL) under Move To drop down.
- Enter 'Amount' to be allocated and then click submit to process the allocation.

Market Picture

Shortcut Key: F5

- The market picture window gives detail on best 5 buy and sell price and quantities available at a particular point in time. Other details available are Total Buyer, Total Seller, Last traded quantity (LTQ), Last traded price (LTP), Volume, value, % change in price, Open price, high price, low price and close price.

Market Picture for FUTCUR USDINR 28AUG2013 Quantity

INSECDs F 1077 FUTCUR USDINR 28AUG2013 Refresh

2	102	63.9425	63.9500	25	1	LTQ: 14 @ 63.9425	Open: 64.4000	DPR: 62.8050 - 66.6875
5	181	63.9400	63.9675	85	1	LTT: 05:00:00 PM 23/08/2013	High: 64.7450	Qty: 0
1	10	63.9350	63.9700	1	1	Vol.: 1602244	Low: 63.9375	Value: 0.00
2	26	63.9325	63.9725	20	1	Value: 103140896512.	Close: 63.9900	G/L: 0.00
8	192	63.9300	63.9775	60	2	ATP: 64.3728	OI: 530328	MTM Pos.: 0.00
						% -0.07	% OI: -10.54	

21683 05:00:00 PM 23/08/2013 48299

Near Month: Far Month:

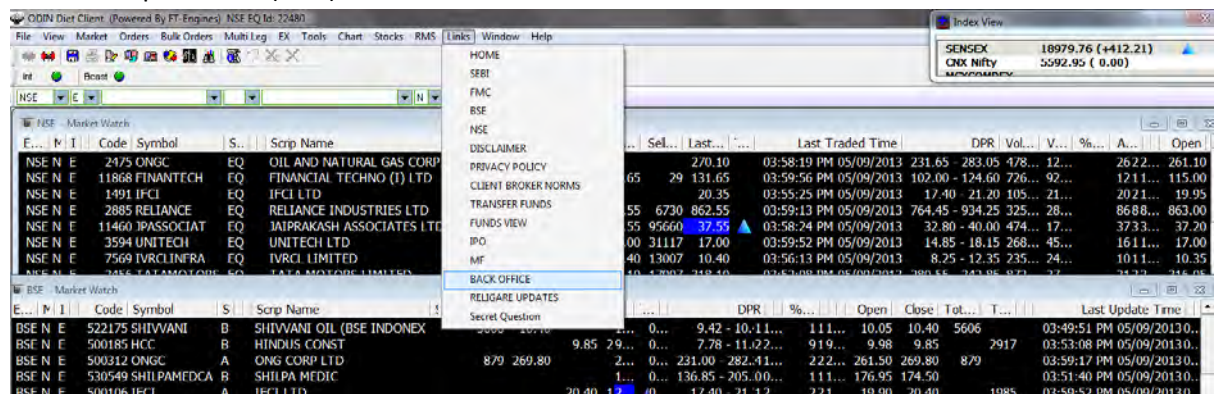
- Select the stock on the market watch and Click on 'Market'. Then select 'Market Picture'

Alternatively, open this window by pressing F5 shortcut key.

- Select exchange and segment. Select E for equities, F for future and O for option segment.
- Type symbol and press tab button on your keypad to retrieve stock specific price/quantity details.

Integrated Back Office

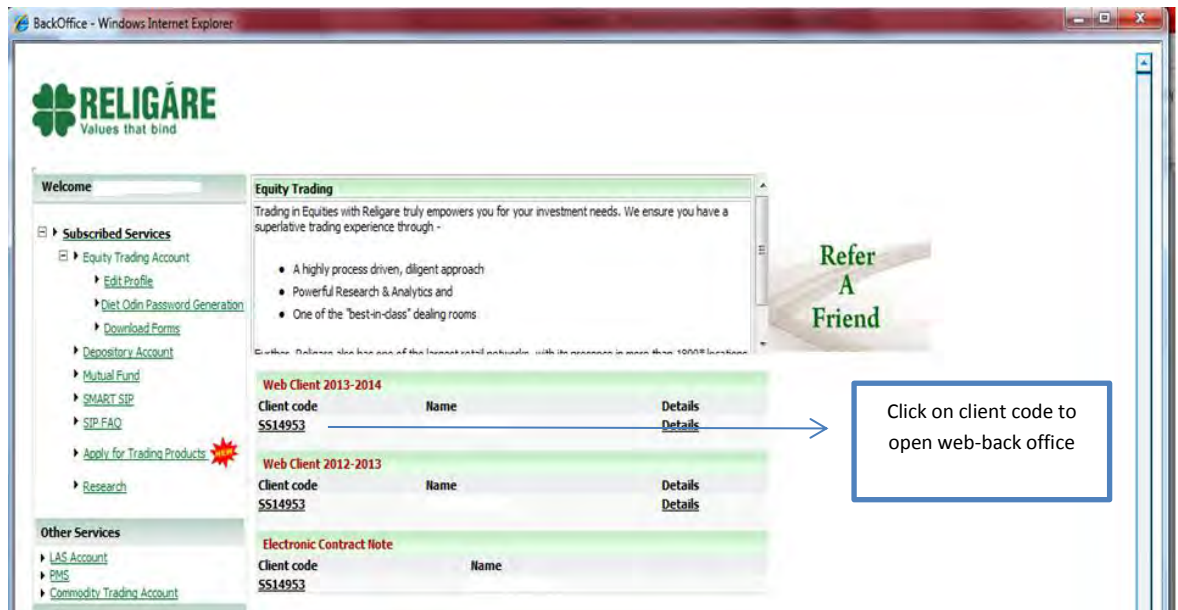
- You can access the back office reports through your trading application.
- Click on 'links' and then select 'Backoffice'. The page will be redirected to the Client Relationship Number (CRN).



- Select 'Equity Trading Account' and 'Commodity Trading Account' under subscribed services to see back office report for respective companies.



- Click on 'Client Code' to open back office reports.



Refer A Friend


Click on client code to open web-back office

Customer Service



Call Us **1860-25-88888**
 (08:00 am - 08:00 pm)

For overseas clients/ BSNL users { Call-N-Trade – **0120-6798000**
 Customer care – **0120-6130300**



Mail Us at: wecare@religareonline.com
Investor Grievance Cell
Mail us at: igreligare@religare.com